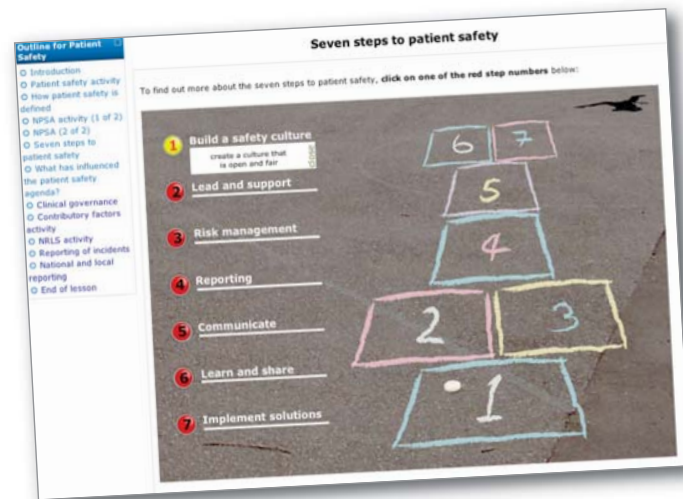


Why PRIMIS+ training matters

Training NHS staff is crucial to producing good quality healthcare data. With the right knowledge and skills, NHS workers can be empowered to evolve health informatics and improve patient care.

In support of data quality drivers within NHS Connecting for Health and more recently The NHS Information Centre for health and social care, PRIMIS+ has taught Primary Care Trust staff how to effectively use, share and analyse healthcare data, mainly in workshops. These trained staff cascade their knowledge to local general practice staff.

We recognise that modern lifestyles and working practices require a more flexible approach to learning and staff should be able to access training in a way that best meets their individual needs. We have



therefore streamlined our training into a 'blended' curriculum, incorporating up-to-date online materials with workshop sessions.

We believe this will equip healthcare staff for the data challenges ahead, allowing them to undertake the online learning at a pace, time and place that suits them.

How will the training be delivered?

PCT staff can take part in a range of practical activities for each training topic. This might include interactive online tasks, to help learners test and demonstrate their understanding.

Learners keep a training record and are able to return and refresh their knowledge at a later date.

The benefits of our new curriculum

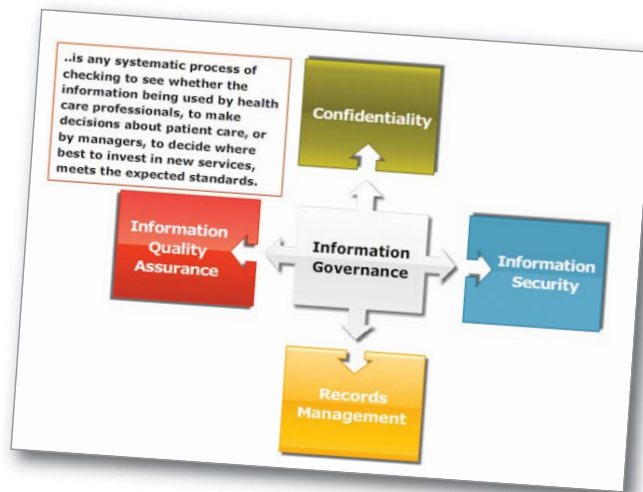
- Learning is delivered in a variety of ways using a modern, flexible approach to enable staff to fit learning around busy schedules.

- Online materials are developed with well-established and widely-used tools so that there is a familiar look and feel to the materials.
- Learners can track their progress through an organised and structured curriculum.
- The support currently in place from Learning Consultants is still available.

A modern approach to learning

Our new syllabus is split into units, each made up of elements containing visual information, activities and interactive reading.

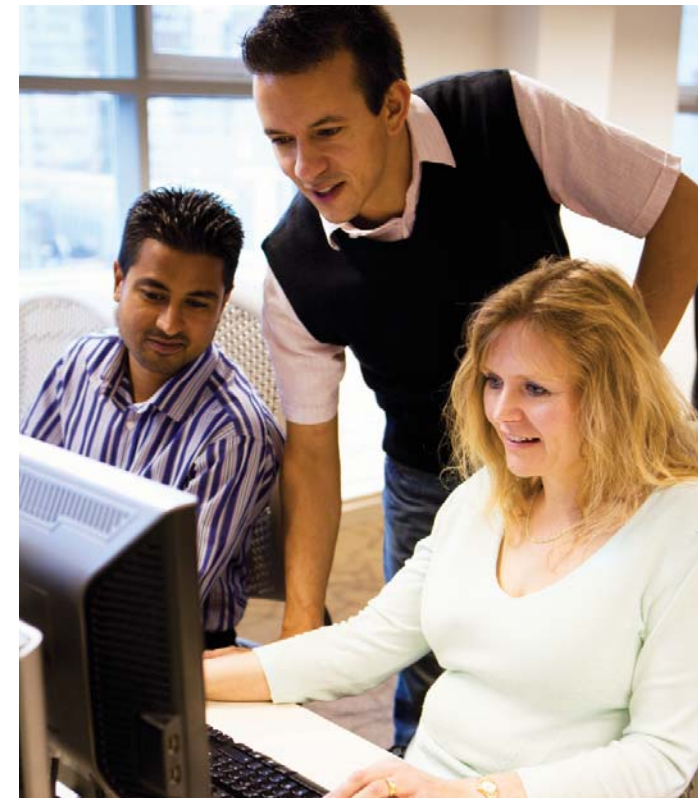
These units have a much larger scope than before – with the pace of e-learning dictated by the individual.



The new PRIMIS+ training curriculum offers a comprehensive and flexible learning experience and will enable primary care staff to understand health information, within the wider context of the NHS.

PRIMIS+

Primary Care Information Services



Training

An introduction to the new PRIMIS+ training curriculum to build confidence, knowledge and skills in users of health information in primary care

PRIMIS+

Website: www.primis.nhs.uk
E-mail: enquiries@primis.nottingham.ac.uk
Tel: 0115 846 6420
Fax: 0115 846 6432

Supporting The NHS Information Centre in data quality training and analysis in primary care

The University of Nottingham
15th Floor Tower Building
University Park
Nottingham
NG7 2RD

Date of issue:
September 2009

Unit title	Element	Element	Element	Element	Element
<p>The Language of Health</p> <p>An explanation of the coding system used in the NHS. Complete this unit and you will be able to select clinical concepts for recording data in general practice. You will also learn how to interpret medical terms.</p> <p>Expected study time: 20 hours</p>	<p>Introducing the Language of Health</p> <p>FACE-TO-FACE WORKSHOP</p>	<p>Introduction to Medical Terminology</p> <p>FACE-TO-FACE WORKSHOP</p>	<p>Read Codes Version 2</p> <p>ONLINE LEARNING</p>	<p>Clinical Terms Version 3</p> <p>ONLINE LEARNING</p>	
<p>Health Information: Confidentiality, Security and Access</p> <p>You've recorded your data, but how do you keep it safe? This unit shows how to keep health information secure, the best ways to share it – and how to stay within data protection laws.</p> <p>Expected study time: 20 hours</p>	<p>What is Health Information?</p> <p>FACE-TO-FACE WORKSHOP</p>	<p>Using Health Information Lawfully</p> <p>FACE-TO-FACE WORKSHOP</p>	<p>NHS Information Governance Framework</p> <p>ONLINE LEARNING</p>	<p>Sharing Health Information</p> <p>SELF DIRECTED LEARNING</p>	
<p>GP Patient Health Records</p> <p>The nuts and bolts of data quality – and how important it is to effectively manage electronic patient records in general practice.</p> <p>Expected study time: 20 hours</p>	<p>Records Management</p> <p>ONLINE LEARNING</p>	<p>Patient Health Records</p> <p>ONLINE LEARNING</p>	<p>Data Quality</p> <p>ONLINE LEARNING</p>	<p>GP Clinical Information Systems</p> <p>ONLINE LEARNING</p>	<p>GP Patient Health</p> <p>FACE-TO-FACE WORKSHOP</p>
<p>Data Extraction in General Practice</p> <p>This unit will show you how to extract data – particularly with the PRIMIS+ CHART toolkit. Complete this and you will be able to manage and run MIQUEST queries.</p> <p>Expected study time: 20 hours</p>	<p>Principles of Data Extraction</p> <p>ONLINE LEARNING</p>	<p>Understanding MIQUEST</p> <p>ONLINE LEARNING</p>	<p>Running MIQUEST Queries</p> <p>FACE-TO-FACE WORKSHOP</p>	<p>CHART: Functionality</p> <p>FACE-TO-FACE WORKSHOP</p>	
<p>Analysing and Interpreting General Practice Clinical Data</p> <p>Once you've extracted your data, how do you interpret the information? This unit will show you how – it offers guidance, explains the pitfalls, shows what to look for and is packed with useful hints and tips.</p> <p>Expected study time: 20 hours</p>	<p>Analysing and Interpreting Data</p> <p>ONLINE LEARNING</p>	<p>Presenting the Outputs of Analysis</p> <p>ONLINE LEARNING</p>	<p>CHART: Analysis and Interpretation</p> <p>FACE-TO-FACE WORKSHOP</p>	<p>CHART Online</p> <p>FACE-TO-FACE WORKSHOP</p>	
<p>Managing Change</p> <p>Change is never easy – but it is sometimes necessary if everyone is to record the best data possible. This unit looks at ways to encourage general practices to improve their health data.</p> <p>Expected study time: 20 hours</p>	<p>Change Management Theory</p> <p>ONLINE LEARNING</p>	<p>Change Management Tools and Techniques</p> <p>FACE-TO-FACE WORKSHOP</p>	<p>Action Planning</p> <p>ONLINE LEARNING</p>		
<p>Facilitation Skills</p> <p>Helping others... to help themselves. Learn the techniques for facilitating change in users of healthcare data – and then put them into practice.</p> <p>Expected study time: 20 hours</p>	<p>Introduction to Facilitation Theory</p> <p>ONLINE LEARNING</p>	<p>Facilitation Tools and Techniques</p> <p>FACE-TO-FACE WORKSHOP</p>			
<p>Training Design and Delivery</p> <p>Giving a good training session is not simply being able to stand in front of an audience and get a few messages across - this unit helps you develop the skills and knowledge to become a more effective trainer.</p> <p>Expected study time: 20 hours</p>	<p>Planning Effective Training</p> <p>ONLINE TRAINING</p>	<p>Delivering Training</p> <p>FACE-T-FACE WORKSHOP</p>			